



ITINERARY

Essence of Australia Luxury 6 Day Outback Experience



Get set for some fine food and wine, luxury and adventure on this epic road trip through Outback New South Wales. Travel in a small group of maximum 8 like minded guests, discover amazing regional restaurants and wineries, stay at an Outback Station, enjoy amazing country hospitality and incredible Outback Pubs on this 6 day iconic tour departing Sydney.

Inclusions

- ✓ Highly qualified and knowledgeable guide
- ✓ Travel in luxury air-conditioned vehicles
- ✓ Breakfast, Lunch and Dinner daily including a formal dinner onsite in the wool shed at Callubri Station
- ✓ Comprehensive commentary
- ✓ All entry fees and activities
- ✓ All touring each day and comprehensive commentary.
- ✓ Pick up and drop off
- ✓ 1 nights accommodation at Byng Street Boutique Hotel Orange
- ✓ 1Nights Accommodation at the Cattleman's Country Motor Inn Dubbo
- ✓ 2 Nights Accommodation Callubri Station Nyngan
- ✓ 1 nights accommodation at Perry Street Hotel Mudgee
- ✓ Lunch at Tonic Restaurant in Millthorpe

Exclusions

- ✗ Alcoholic & non alcoholic beverages (Apart from Wine Tastings)
- ✗ Travel insurance (highly recommended)
- ✗ Additional activities not mentioned
- ✗ Gratuities
- ✗ Souvenirs
- ✗ Snacks

Pick Up

Pick Up 7am, Day 1 - Harrington Street entrance of the Four Seasons Hotel, Sydney.

Return

Return 6pm, Day 6 - Harrington Street entrance of the Four Seasons Hotel, Sydney.

Alternative arrangements can be made at time of booking for additional pick up locations including home address pickups.



Legend

B: Breakfast

L: Lunch

D: Dinner

Itinerary: Day 1

Sydney to Orange

L, D

Your guide will meet you in Sydney today for an early morning start. Head north out of the city crossing the Sydney Harbour Bridge towards the historic town of Richmond. Enter the scenic Bells Line of Road which gently meanders through the stunning lower Blue Mountains. We stop at the tiny village of Bilpin for a coffee.

Continue west passing through the towns of Lithgow and Bathurst before arriving in the small village of Millthorpe. Lunch today is the well known Tonic Restaurant. A local institution, Tonic's seasonal menu focuses on local produce such as Mandagery Creek Venison and Cowra Lamb. Over the past 17 years, Tonic has regularly been awarded a chefs hat by the Sydney Morning Herald Good Food Guide. Sit back, relax and enjoy the wonderful food and hospitality.

After lunch you will have some time to stroll the streets of Millthorpe, discovering the tiny boutiques and local arts and crafts stores of this charming village. Reboarding your vehicle, continue along the quaint back roads towards Orange. Check into your accommodation at the Byng Street Boutique Hotel. Ideally located in the heritage precinct of Orange, the hotel is located within a beautifully restored historic building and oozes charm, sophistication and luxury.

The town of Orange sits in the shadow of Mount Canobolas, a majestic dormant volcano. The rich soil provided by the volcano combined with the regions high altitude provide perfect conditions for exceptional cool climate wines and amazingly fresh produce.

The rest of the afternoon is yours to enjoy and we have arranged dinner for you tonight at the beautiful Yallungah Dining Room located in the original homestead at the Byng Street Boutique Hotel.

Travel Distance

255 kms

Itinerary: Day 2

Orange to Dubbo

B, L, D



Enjoy a leisurely breakfast this morning before your guide meets you for a wonderful food and wine tour of the local area.

Our first wine tasting this morning is at Colmar Estate Wines. This family owned small vintage winery features distinctive tasting wines from fruit that is handpicked from vines just metres from the charming cellar door.

Enjoy a 1 hour tasting this morning learning about the unique process of growing wines at 1000 metres above sea level.

Lunch today is at the famed Ross Hill Wines, located on the rolling hills of Mount Canobolas. Enjoy the scenic views from The Pantry while indulging in lunch made from local produce with accompanying wines.

After lunch our journey continues North West towards Dubbo. Admire the rolling farm land as we travel along Banjo Patterson Way. Arriving into Dubbo late in the afternoon, check into your accommodation, The Cattlemans Motor Inn. Your hotel is well placed close to local restaurants and great country pubs.

Dinner tonight is at the local Old Bank Bar and Restaurant.

Travel Distance

154 kms

Itinerary: Day 3

Dubbo to Callubri Station

B, L, D



Your guide will meet you after breakfast this morning as we take an interesting tour of the Royal Flying Doctor Service. See the live Operations Room in action and tour the tarmac, viewing the inside of an RFDS aircraft. The RFDS provide an amazing service to the outback community and this immersive tour allows you to get behind the scenes to see how they work.

After this we make a visit to Saddler and Co, a local leather producer that have been designing and making a unique collection of leather goods based on timeless design and craftsmanship since 2010. You will have an opportunity to browse their store and buy something truly unique and handcrafted.

We have lunch at a local café before heading to Callubri Station.

Continue North West along the gun barrel straight Mitchell Highway. Pass by the tiny outback communities of Cathundrel and Nevertire before arriving at Callubri Station.

Callubri Station is one of the most unique farm stay venues in Australia, fusing history and modern sophistication to create an unparalleled experience. With uninterrupted views across the western plains, the wild yet alluring landscape provides the perfect canvas for adventure whilst immersing guests in the magic of the Australian outback. The 28,000 acre property is steeped in more than 140 years of family history.



Purchased in 1878, the property has a long association with Merino Wool and Lamb production. The property provides guests with a unique rural experience and a glimpse into Australian farm life not often accessible to outsiders. Callubri Station's true luxury lies in its seclusion; with a maximum of 8 guests sharing the property, we have exclusive use over the next 2 days.* After meeting our hosts, you will be shown to your amazing accommodation for the next 2 nights.

The Sky Suites are located on the western side of the property and offer a luxuriously furnished room and ensuite with an outdoor deck overlooking a 12 metre mineral container pool with swim jet and sun lounges.

For the ultimate night's outback sleep the Sky Suites feature premium Executive Supreme Pillow Top beds, high count cotton blend linen, feather doonas and a selection of pillows. Large, double-glazed windows surround the bed offering uninterrupted views across the property.

The ensuites walk-in shower, heated towel rail, and timber vanity offer guests unrivaled bare foot luxury in the middle of the Outback.

After some time to freshen up, meet down at the Wool Shed for a relaxed dinner, cooked country style over the coals. Enjoy local wines and later on, relax around an open fire pit underneath 1 million stars. When you are ready, head back to your room to cosy into your comfy bed for an amazing nights sleep.

Travel Distance

169 kms

**Minimum group numbers apply to have exclusive use of the property*

Itinerary: Day 4

Explore Callubri Station

B, L, D



Enjoy breakfast this morning at your leisure, waking up to the sounds of the Outback. This morning join the Station owners on a tour of the vast and stunning property. Jump on board the old Landcruiser and travel over dirt tracks to discover the ruggedness of Callubri Station. Keep a look out for a range of native wildlife including red and grey kangaroos, emus, echidnas and goannas.

Returning to the station enjoy a Ploughmans Style lunch while reflecting on the mornings activities.

The afternoon is yours to enjoy. Continue to explore the property on foot, relax around the pool or maybe indulge in a mineral bath treatment.

Later in the day, meet your hosts again to travel to another spectacular part of the 28000 acre property to enjoy sundowners as the sun sets. The Lookout lets you view the rolling Western Plains as you farewell another awesome outback day. Afterwards return to your room.

Dinner tonight is a real treat. Get set for a formal 4 course sit down dinner beautifully presented with a lavishly set table in the middle of the wool shed. This rustic and charming experience includes chef prepared meals using the freshest locally sourced produce with matching wines. An epic way to spend your last night on Callubri. Afterwards you can again retreat to the comfort of the fire pit and enjoy another outback night under 1 million stars.

Travel Distance

0 kms

Itinerary: Day 5

Callubri Station to Mudgee

B, L, D



Wake up to another beautiful outback sunrise this morning. Enjoy a leisurely breakfast before departing Callubri Station to Mudgee.

We head along the Mitchell Highway passing by small towns. There will be time to stop for coffee along the way and we enjoy lunch at an iconic Australian Pub.

Arriving into Mudgee mid afternoon we head straight to Logan Wines. Enter the stunning cellar door, perched on the side of a hill overlooking Logans Vineyard. Wine maker Peter Logan has made a career out of producing boutique wines such as Tempranillo and Pinot Gris, unfamiliar in this region. His labels include names such as Clemintine, Appletree Flat and Ridge of Tears. Enjoy some interesting tastings this afternoon and a bit of fun.

After our private tasting its time to check into your accommodation for the night, The Perry Street Hotel, located in the heart of Mudgee. The 19th Century building exudes charm and the hotel has been lovingly restored from its original use as a Mechanical Garage.

The Perry Street Hotel is located close to the main street and cafes. Tonight we have booked dinner at the Oriental Hotel.

Established in 1876, The 'Ori' is one of the towns most iconic hotels. Relax in the Gin Bar and enjoy a pre dinner drink, before moving onto the Ori Kitchen to enjoy some freshly cooked local fare.

Travel Distance

290 kms

Itinerary: Day 6

Mudgee to Sydney

B, L



Your guide will meet you at 10am this morning after a leisurely breakfast. You may also want to explore the nearby main street of Mudgee with its unique boutiques.

Our first stop is Robert Stein Winery. One of the oldest wineries in the district, Robert Stein produce a number of different styles of red and white wines, ranging from dry through to semisweet whites as well as rich red wines. The wines are made from fruit from the Mudgee District only. Indulge in a private tasting where you will have a chance to taste a good selection.

Lunch today is a special treat. Just a short walk from Robert Stein is The Pipeclay Pumphouse, a well known Paddock to Plate restaurant creating amazing menus from locally sourced produce. Sit back and relax today and enjoy the creations of chef Andy Crestani. The views from the restaurant are spectacular and indulge in local wines to complement your meal.

After a long and relaxing lunch, reboard your vehicle with your guide and make your way back to Sydney. You will have time to stop along the way and enjoy the scenic drive, arriving back in Sydney by around 6pm.

Travel Distance

269 kms

Additional Information

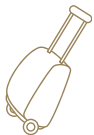


Time Zone
AEST UTC +11



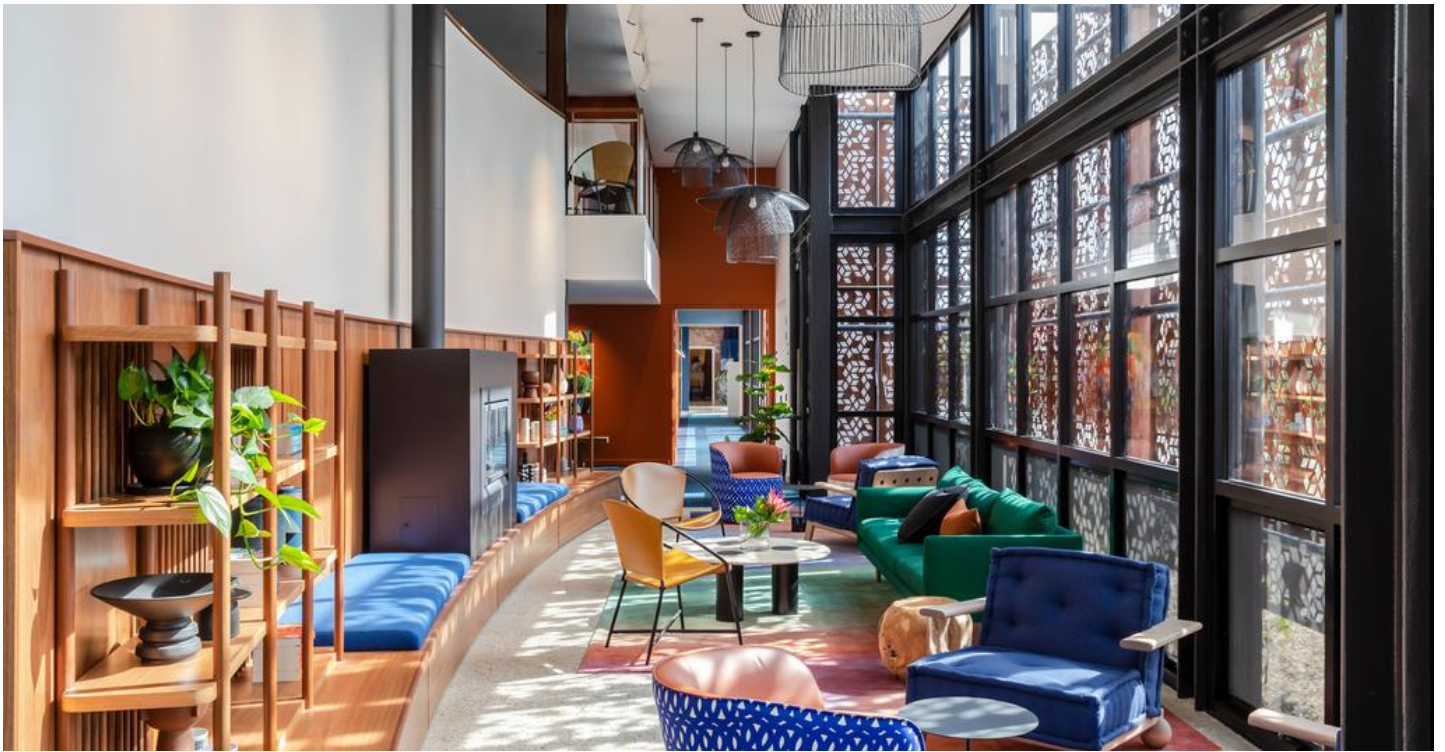
Climate

The Outback climate is semi-arid and rainfall averages just 280 mm a year, with most rain falling in spring and the least in autumn. But rainfall is notoriously erratic and big falls that close roads can happen any time if you're unlucky. Summer is generally hot, with average maximums of around 32 degrees but can get as high as 40 degrees and average minimums of between 16 and 17 degrees. But humidity is often low. In winter the days are cool and the night's cold, with average maximums of 15 degrees and average night-time lows of around 0 to 4 degrees. Frosts are not uncommon. The climate is ideal for travelling and exploring the country in the cooler months.



What to Bring

- Day pack/shoulder bag
- Layered, comfortable clothing for warm days and cool nights
- Comfortable walking shoes
- Camera
- Small Binoculars



Luggage/Baggage

A maximum of 20kg per person is allowed on your tour. Preferably 1 x small soft sided bag and 1 x carry-on bag to take in the vehicle with you.



Level of Fitness

Minimum level of fitness is required as there are a number of short walks included in the itinerary.



Contact

Australian Luxury Escapes
PO Box 42 Pennant Hills NSW 1715

Tel: 61 2 9980 8799

E: tours@australianluxuryescapes.com

Disclaimer:

From time to time our itineraries are updated prior to departure to incorporate improvements stemming from past travellers' feedback as well as updates from our service providers. Some changes may be necessary due to inclement weather and common seasonal changes to timetables and transport routes. Whilst we endeavour to give you as much notice as possible, this can happen with little notice so please be prepared for modifications to the route. The order and timing of included activities may also vary from time to time.



M A P

Essence of Australia Luxury 6 Day Outback Experience